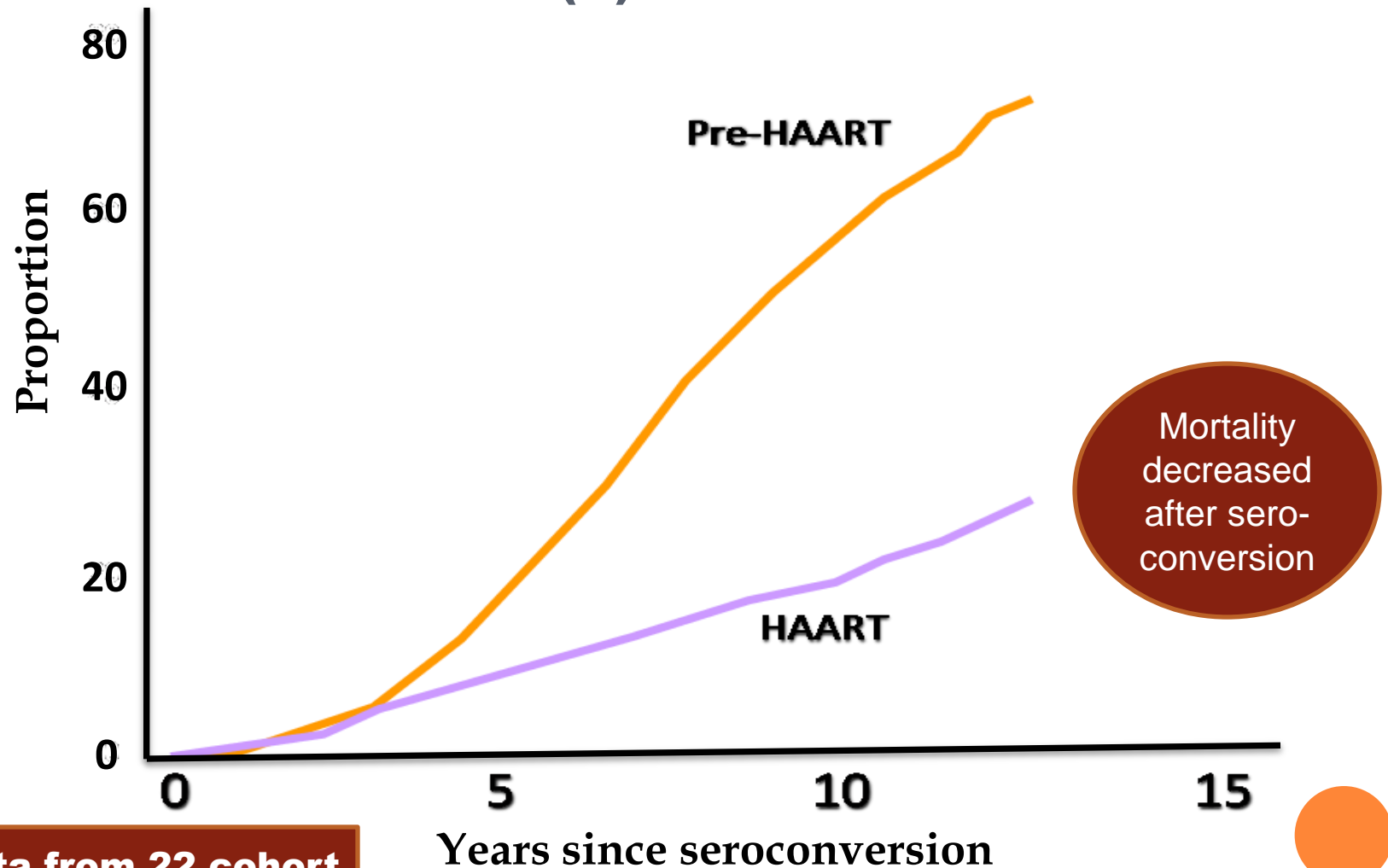




OVERCOMING HEALTH WORKFORCE SHORTAGE AGAINST NCD THREATS IN THE ASIA-PACIFIC REGION: PROGRESS IN 2010

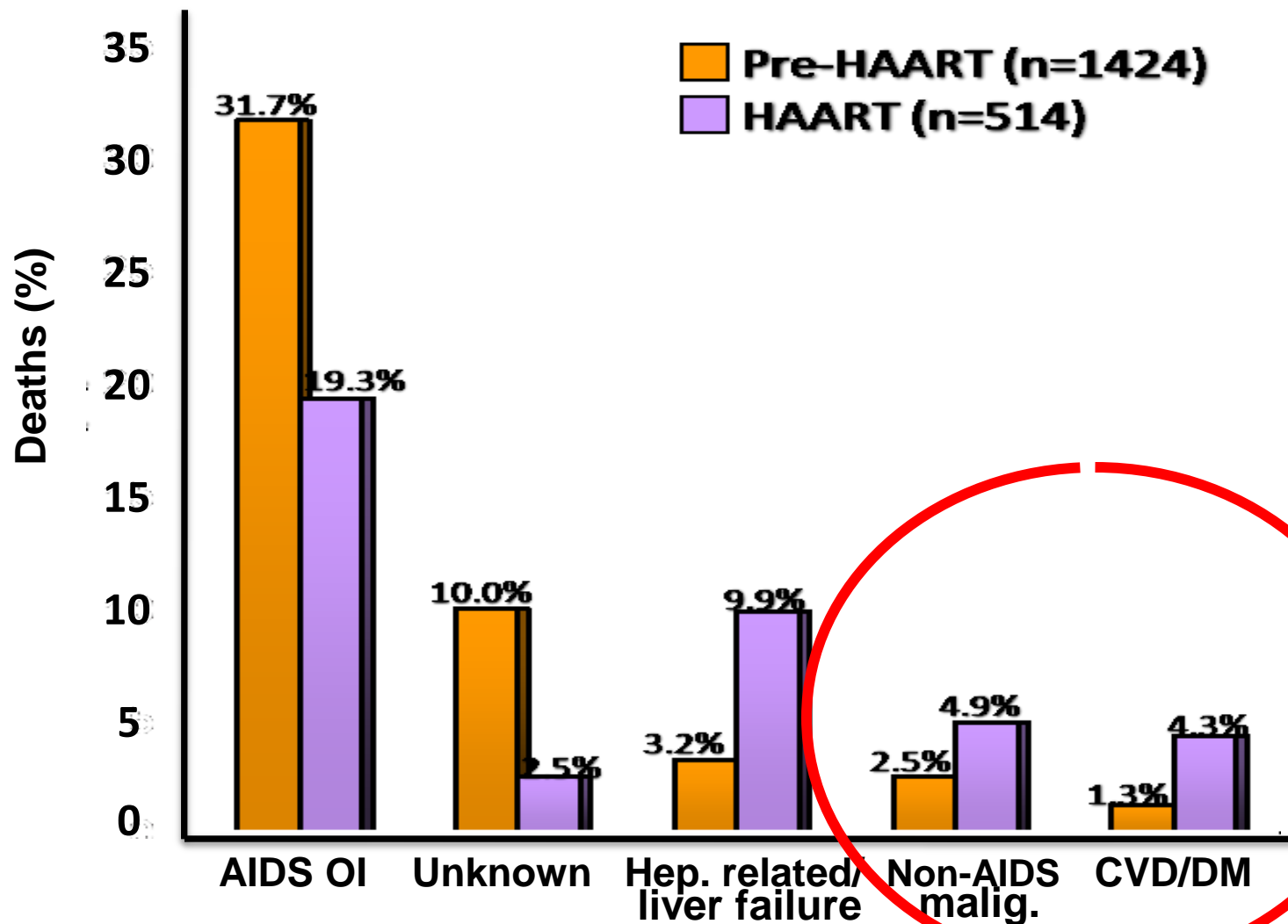
**Masamine Jimba
The University of Tokyo, Japan
16 Jun, 2010 in Nanjing**

HIV INFECTION IS GETTING CHRONIC: MORTALITY AMONG HIV(+) INDIVIDUALS



Data from 22 cohort studies in Europe, Canada, Australia

CAUSES OF DEATH AMONG HIV(+) INDIVIDUALS

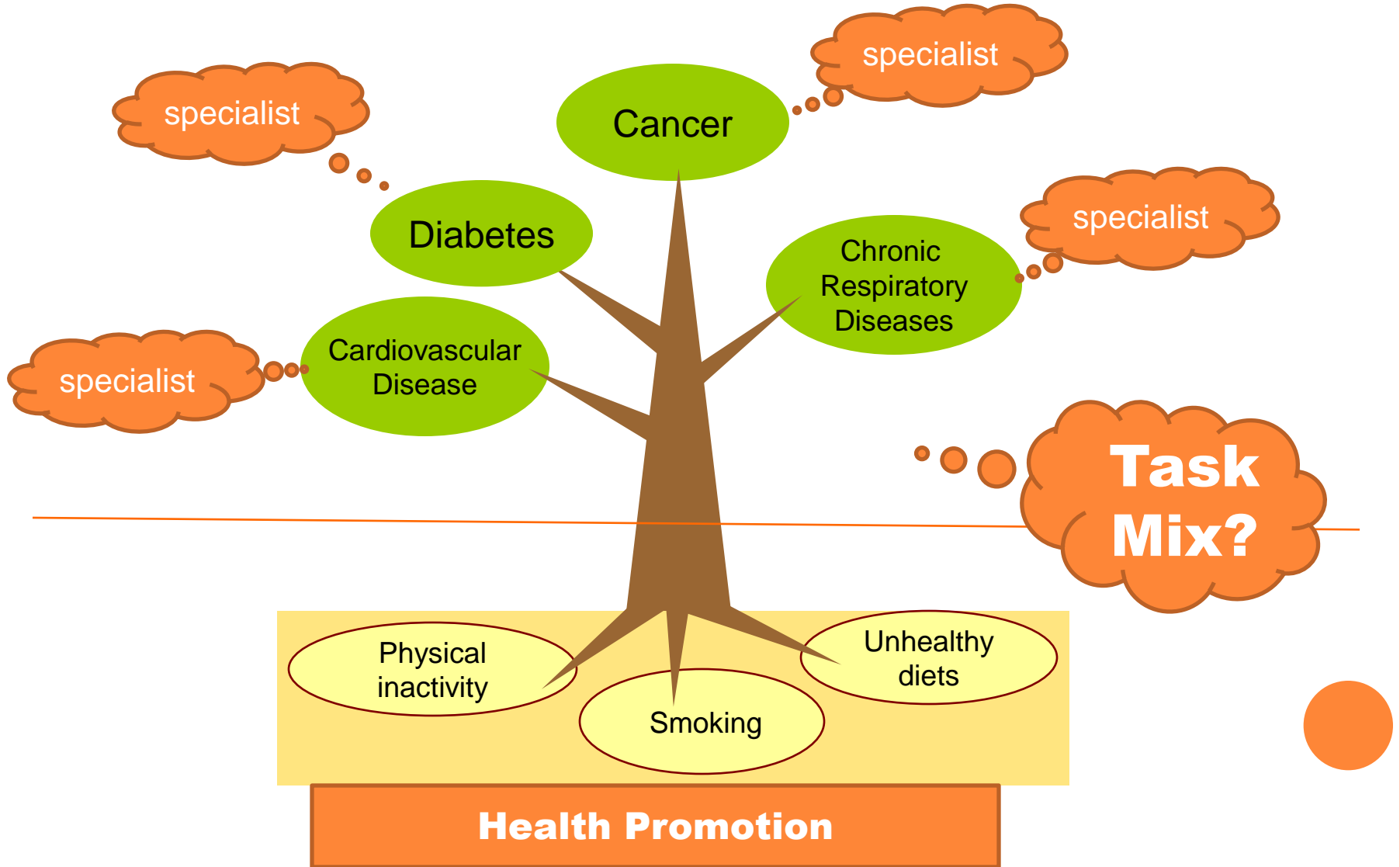


BOTH HIV AND NCDs

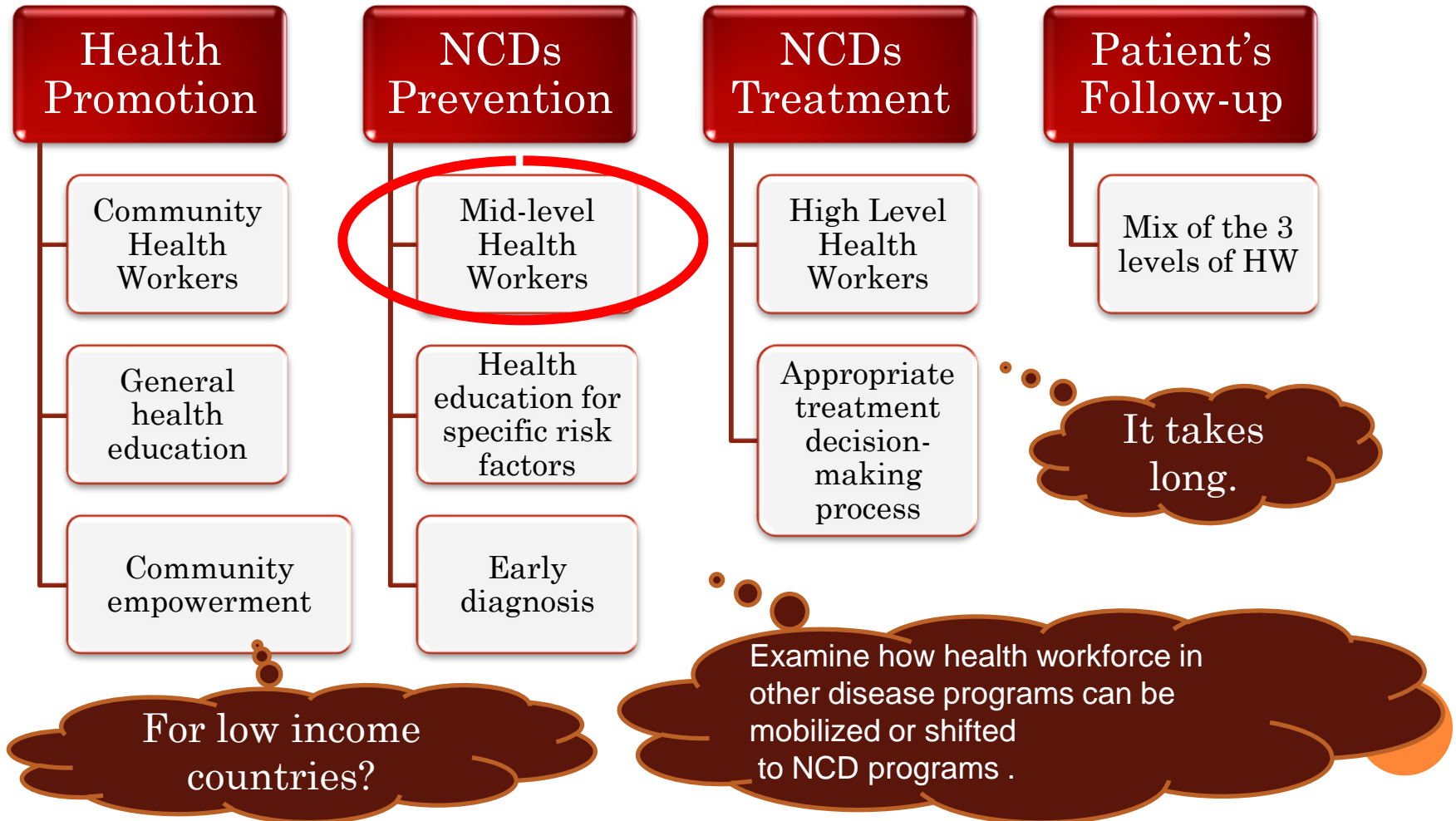
- Success in HIV programs will fail if nothing is done for NCDs**
- Invest in health facilities for HIV treatment**
 - ➔ Increase regular patients**



WHAT KIND OF HEALTH WORKFORCE?



HEALTH WORKFORCE STRENGTHENING FOR NCDs



MID-WIFE AS A POTENTIAL RESOURCE FOR NCD PREVENTION IN SRI LANKA

- Sri Lanka :IMR, MMR reduction was successful by the establishment of mid-wife system throughout the country.
- Mid-wife for the prevention of NCDs?

CURRENT STATUS ON MGD4

Scorecard

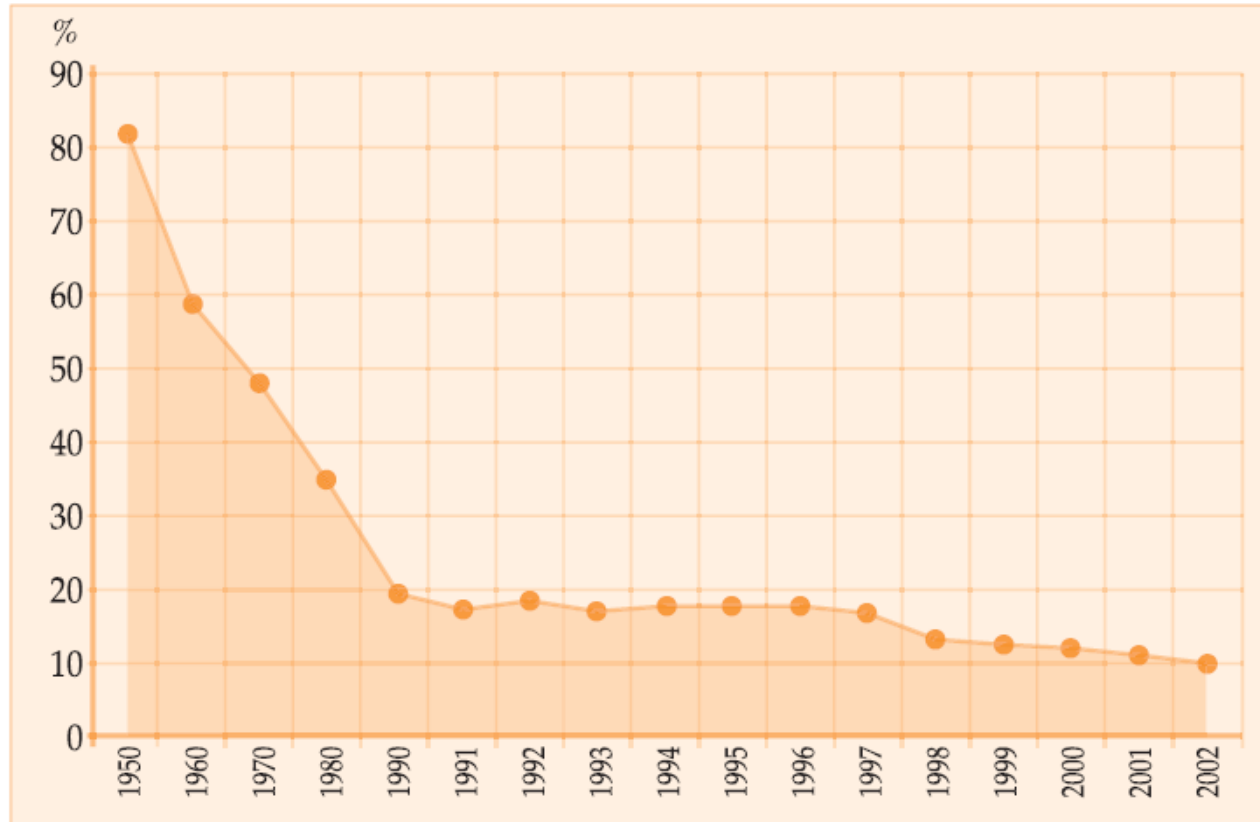
Indicator	1990	2000	MDG target	
			2015	Status
13. Under-five mortality rate per 1,000 Live births	22.2*	18.8**	12	On track
14. Infant mortality rate per 1,000 Live births	19.3	12.2	12.8	On track
15. Proportion of 1-year-old children immunised against measles.	80	88	99	On track

Source: (13,14) - RGO , (15) -Ministry of Health

* 1991, ** 1999 (13),(14) - North & East not covered due to data limitations

Source: Millennium Development Goals Country Report 2005 Sri Lanka, UNDP

INFANT MORTALITY RATE



Source: Central Bank of Sri Lanka, various years

Source: Millennium Development Goals Country Report 2005 Sri Lanka, UNDP

CURRENT STATUS ON MDG5

Scorecard

Indicator	1990	2001	MDG target	
			2015	Status
16. Maternal Mortality ratio per 1,000 live births	0.92	0.47	0.36	On track
17. Proportion of births attended by skilled health personnel	-	97	99	On track

Source: (16)-Family Health Bureau

Source: Millennium Development Goals Country Report 2005 Sri Lanka, UNDP

HOW TO EXPAND THE ROLE OF MID-WIFE IN NCD PREVENTION ?

- Integration? : It may increase workload of mid-wife and decrease the quality of existing service.
- Focus on the **common determinants** of maternal and child health which influence the risk of NCDs in family members.

EDUCATION ROLE OF MID-WIFE

- Giving advices to mothers on nutrition, exercise and other healthy life styles
- MCH plus NCDs

MID-WIFE TRAINING COURSE FOR NCD PREVENTION

- Collect baseline data: NCD knowledge, etc.
- Identify and assess the common determinants for MCH and NCDs
- Intervention: training for NCD prevention (smoking, alcohol drinking, obesity, diet, physical activity, psychosocial factors).
- Mobilize local resources for NCD prevention.

DETERMINANTS OF TOBACCO NON-USE AMONG URBAN ADOLESCENTS IN CAMBODIA, LAO PDR AND NEPAL

	Cambodia	Lao PDR	Nepal
Study Area	Phnom Penh	Vientiane Capital	Kathmandu
Target Population	<p>Students: Grade 7th & 10th students from four public schools having medium level academic performance in each city</p> <p>Parents: One or both of the parents/guardian of some of the students</p>		
Sample Size	300 students and 100 parents in each country		
Method	<p>Students: 100 items with four scales (Fagerstrom Nicotine Addiction scale, PSS, CES-D Scale and UPPS urgency factor sub scale) -Self-administered questionnaire</p> <p>Parents: 110 items with four scales (same as students) -Self-administered questionnaire -Interviewing</p>		
Study Period	Autumn-Winter, 2010	Autumn-Winter, 2010	May-June, 2010

NCD-RELATED RESEARCH AMONG ADOLESCENTS IN CAMBODIA, LAO PDR AND NEPAL

Country	Research Title	Target Population
Cambodia (Battambang)	Alcohol expectancies as a predictor of perceived academic performance among adolescents in Battambang Provincial town, Cambodia	300-350 students in 7 th and 10 th grade
Lao PDR (Vientiane Capital)	Exposure to tobacco marketing and susceptibility to smoking among nonsmoking male students in Vientiane Capital, Lao PDR	850 student boys in 8 th and 11 th grade
Nepal (Kathmandu)	Perceived peer and parental disapproval and tobacco use among urban adolescents in Nepal	1250 students in 7 th , 8 th and 9 th grade
Nepal (Kathmandu)	Alcohol expectancies and use among adolescents of Traditional alcohol user and Traditional alcohol non users communities of Nepal	800 students in 7 th , 8 th and 9 th grade